



SAP's global data mesh for composable data management supporting cross-domain consumption

Mihnea Andrei, Anil Goel, SAP
September 9, 2022

Public

Agenda

Data Integration in the cloud

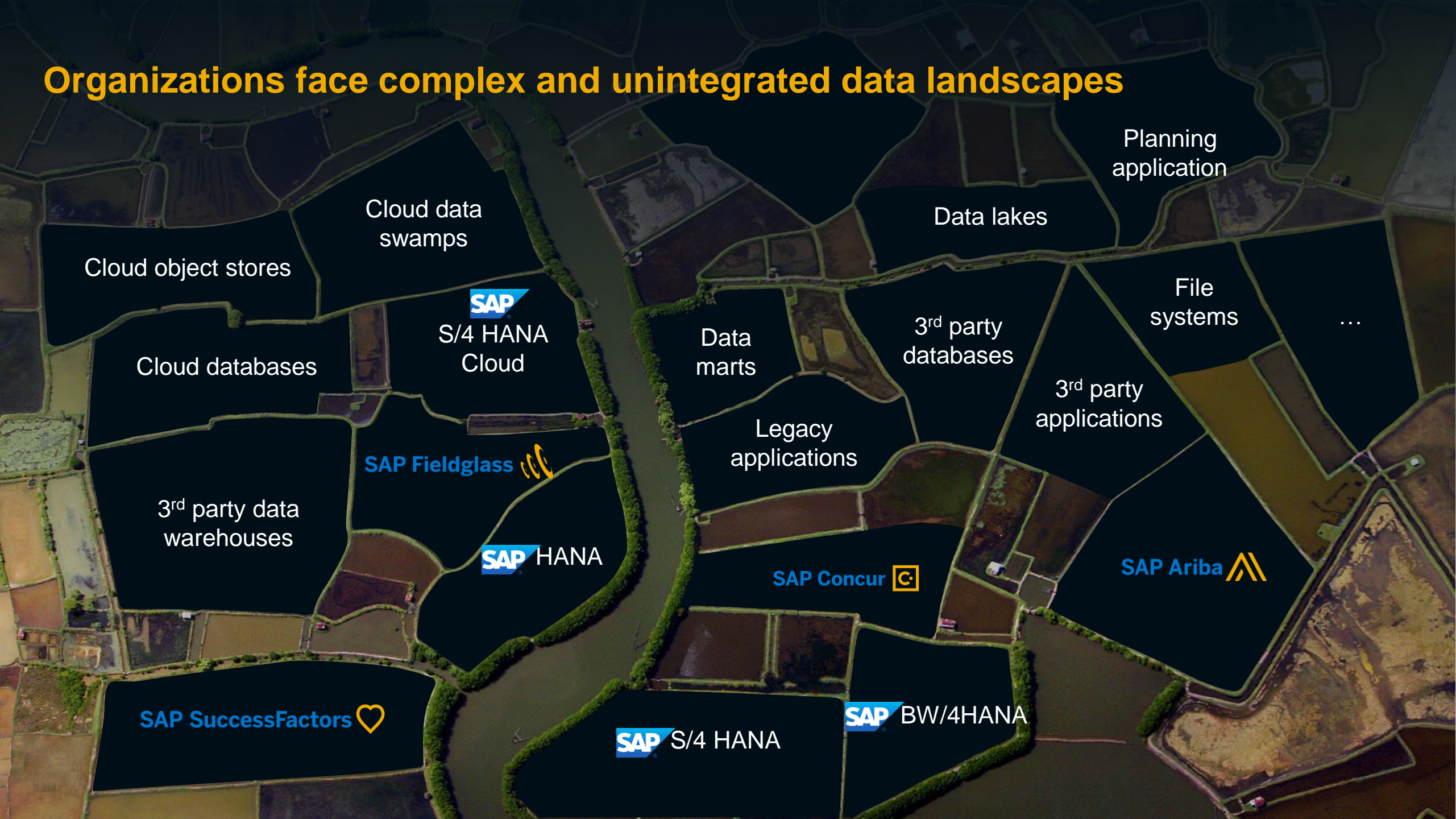
The Data Plane Service (DPS)

DDD: the DPS as a data mesh

DPS architecture

From the DPS to the Data Suite (DS)

Organizations face complex and unintegrated data landscapes



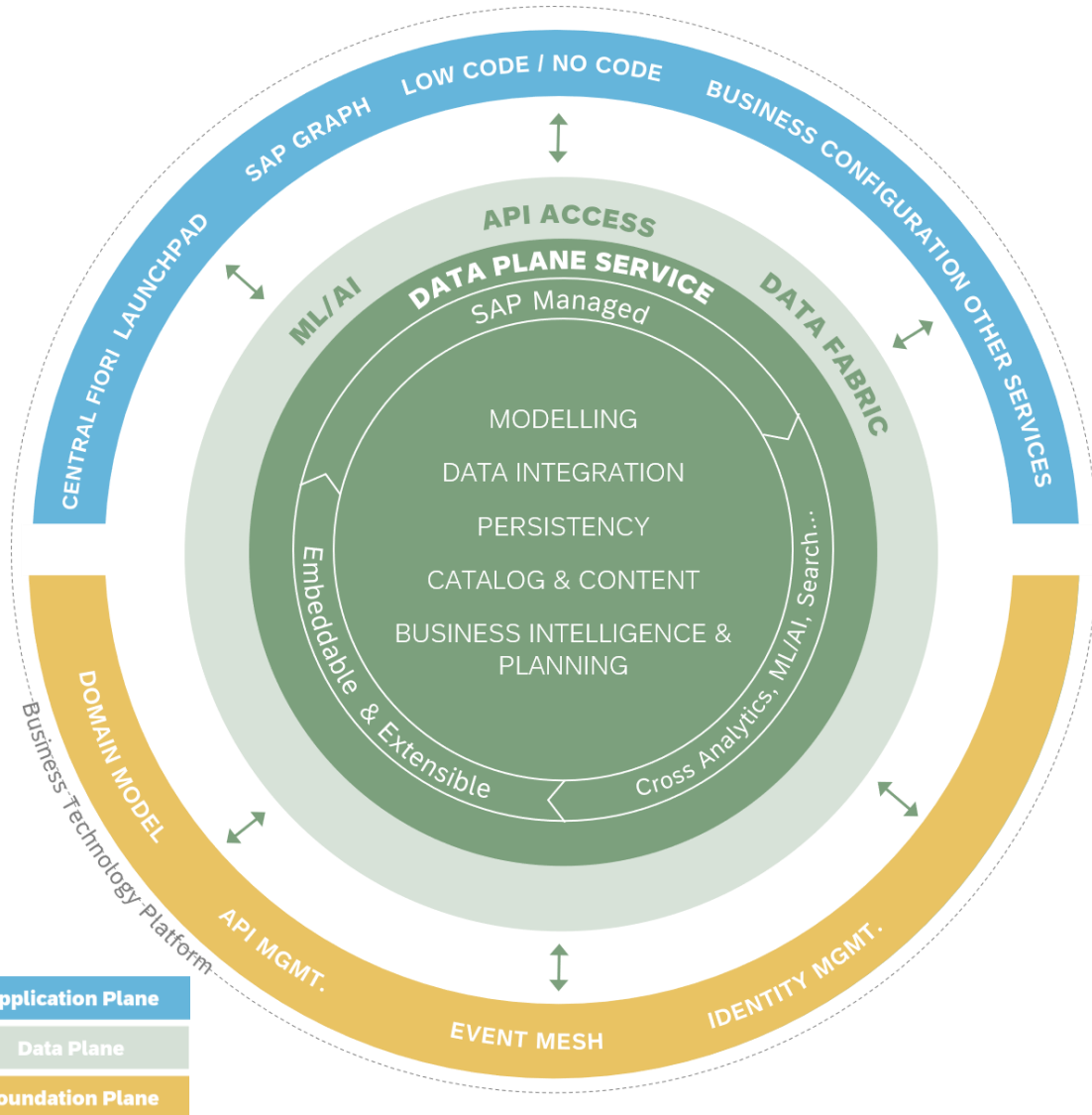
Organizations face siloed and disconnected data that lacks business context



Application Data with
Business Context

Data Lake

Data Plane Service Vision



Provide the **Data Foundation** for SAP business applications

- Provide a unified data management layer to SAP LoBs
- Be competitive
- Substantial customer value in cross-domain analytics and data-driven applications

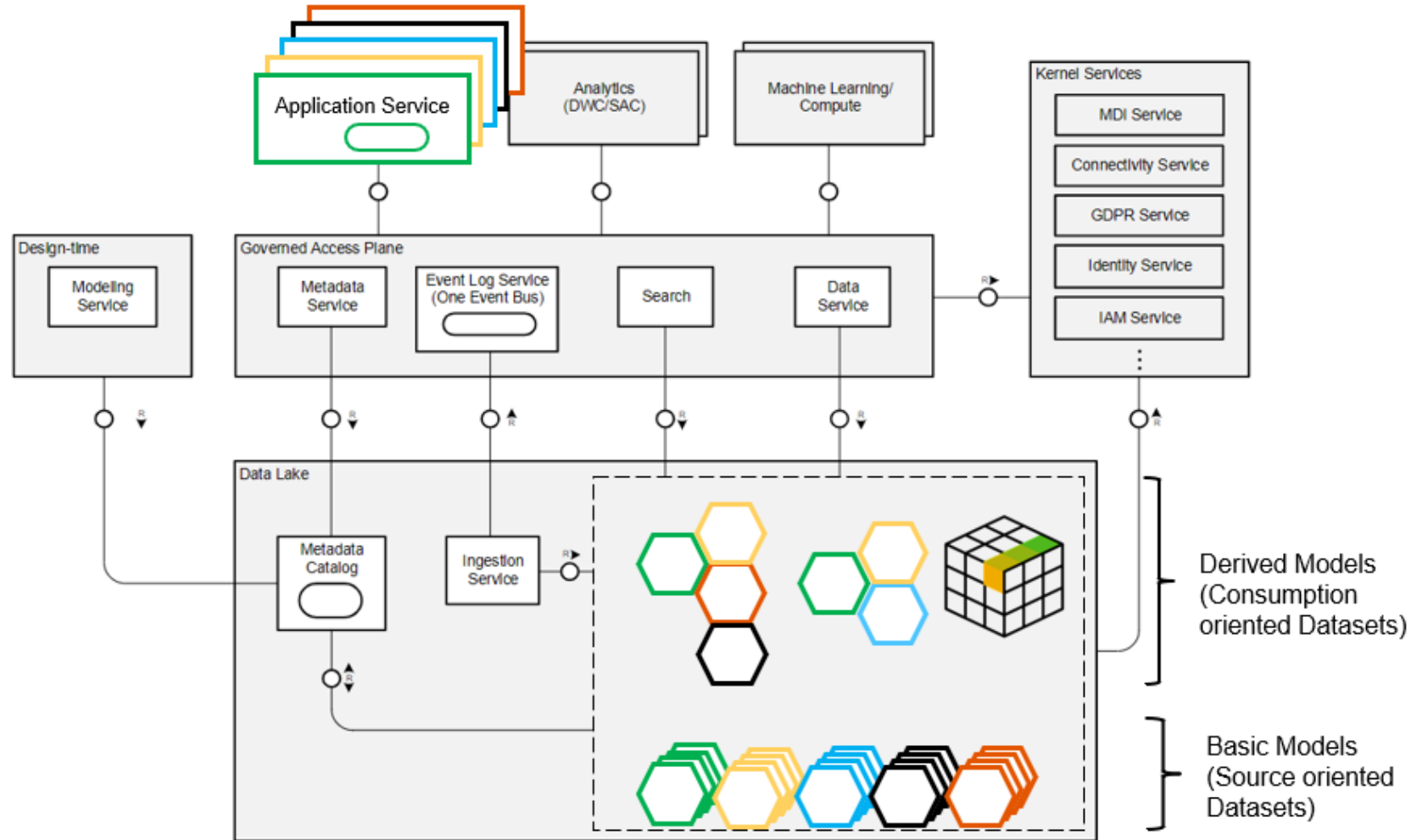
Provide **semantic-based** data integration

- The SAP environments are the arena for context-rich data integration
- Innovate on SAP data in SAP environments
- Harness the value of all SAP data and foster data driven value creation

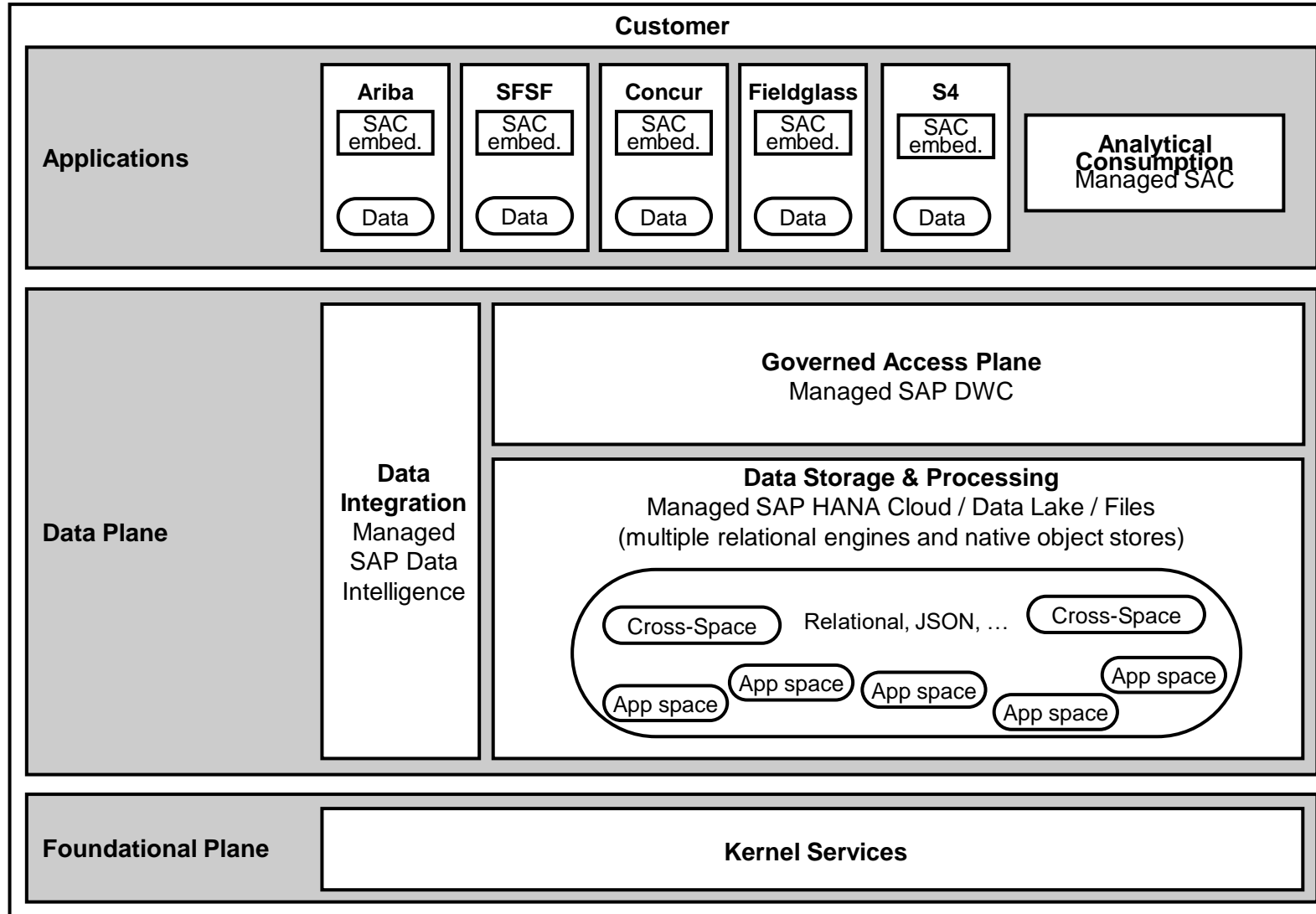
Transform SAP data and analytics portfolio into composable services

- Design a common set of cloud services
- Drive common platform usage of such services

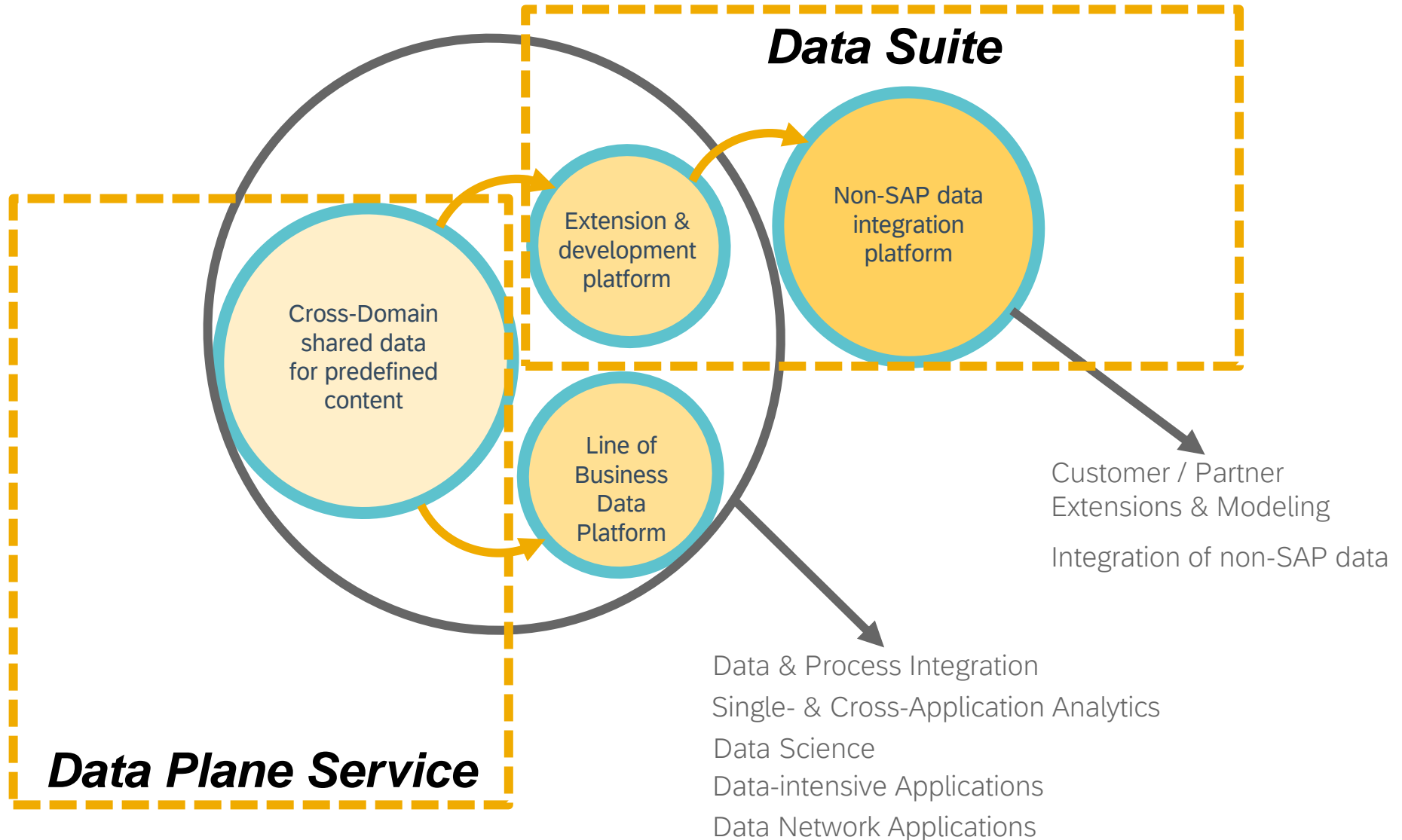
The SAP Data Mesh & DDD: Decentralized Data Modeling, [Collocated] Data Ingestion, Data [Cross-] Consumption



SAP Data Plane Service – Data Mesh based on composable SAP technology



Data Plane Service Use Cases and the Data Suite



Thank you.

Contact information:

Mihnea Andrei
mihnea.andrei@sap.com

